

TRITON<sup>TM</sup>

primo | custom | dynamix<sup>®</sup>

The seating  
system has  
evolved..



# Pride in what we do...

We at JCM pride ourselves in product development driven through listening and responding to the requirements of our clients. Since the launch of our Triton Dynamix® prototype at Naïdex 2007 we have been trialling the system extensively throughout the UK and abroad, utilising the feedback we have received to refine our product design.

We are pleased to say that the feedback on our Triton Dynamix® has been immensely positive and are proud to reveal that this is a seating system designed specifically around the needs of the end user...

“ A miracle chair.  
Mother - Barnsley ”

“ very robust, withstands  
the test of time.  
OT - East Kent ”

“ Great postural management  
and very easy to adjust and  
work with.  
OT - South Essex ”

“ Always manages to achieve  
a good position, and parents  
love the functions and wide  
choice of colours available.  
OT - Brighton ”

We arranged a trial of the seat as a result of being unable to comfortably seat a 9-year old child with extreme extensor spasm. When sitting in other special seating chairs the child would continually attempt to extend, resulting in discomfort, marking from straps and excessive perspiration.

In the Triton Dynamic seat, over a 2-week period none of the above mentioned problems occurred. The child sat symmetrically and when they did extend the recoil of the back rest appeared to break the extensor pattern and return the child to a comfortable seating position. The child did not attempt to extend as often whilst sitting in the seat, and they did not perspire as much.

Senior OT / Senior Physiotherapist  
Barnsley NHS

“ Flexible, can be used with  
a wide range of conditions  
and children. This means  
we can recycle them.  
School OT -  
Maidstone Kent ”



“ Our clients are  
individual and we  
expect our products  
to represent that ”

## Introducing the range...

While visiting the Bobath Centre and working closely with the children and therapists, JCM identified the need for a less restrictive seating system, one which recognised the importance of movement and flexibility. It was this concept we proposed to our design team: design a seating system which offers our clients the high levels of support associated with JCM but integrate the ability for freedom of movement and expression.

Equally important was the aim to tailor the solution specifically for the users requirements. At JCM we appreciate that seating systems can have a gruelling life and the products we design need to be strong enough to cater for intense, everyday wear and tear.

Through intelligent in-house design and manufacturing facilities we have directly utilized the feedback from our representatives, therapists and users, to ensure this range truly fulfils our clients needs and expectations and offer a product which is of exceptional quality at a price that is highly competitive. The Triton's™ lightweight aluminium construction ensures that the seating system is strong enough to stand the test of time, even with the most extreme users.

Our intention with this range was to step away from the crowd and enhance our abilities to customise for specific postural needs; our clients are individual and we expect our products to represent that.

At JCM we are committed to developing products which provide early intervention and give the best postural management from an early age, we feel the Triton™ range achieves that. In line with providing a complete 24 hour postural care approach, the seating system is versatile enough to be used on various different bases throughout each area in a child's daily routine including play, school, recreation and rest.

This is our most comprehensive range yet, offering more choice than ever before and complete postural support to suit an age range from 6 months to adult. Throughout the seven seat sizes the therapist or carer will be able to apply corrective support wherever required, ensuring assisted postural development for life.



play



learn



discover



choose

# early intervention

“ It is far better to be Pro-Active in the management of posture than it is to be Re-Active to fix deformity. ”

It has been a long known fact that the sooner a child can be positioned, the sooner preventative measures can be taken to stop fixed deformities occurring and allow good postural growth to take place. Anticipative positioning also ensures correct hip and spine development and helps prevent asymmetry later in life.

Early intervention is also a critical factor in a child's psychological development into adulthood, often affecting their perception of the world and their ease of personal management in later years. Our belief is that by providing the correct postural positioning from

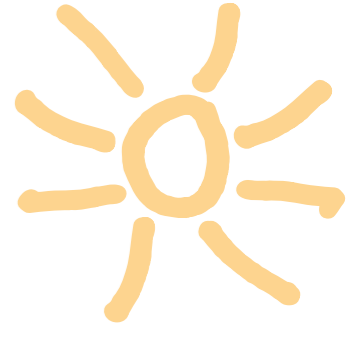
an early age, we can endeavour not only to ensure correct skeletal and psychological development, but fundamentally to give children the facility to live life as comfortably and normally as possible.

In keeping with these principals, we have specifically ensured that our Triton™ model size 0 can accommodate the smallest of children, as soon as they are ready to adopt a sitting position.



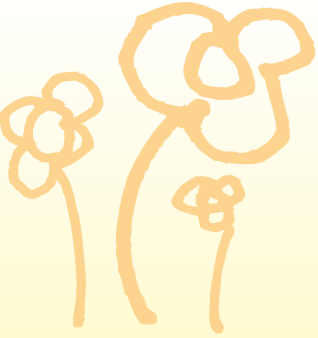
# for play

support from 6 months



## features

- Adjustable back angle
- Height adjustable base with prone & recline tilt in space
- Pommel & kneeblock options
- Retractable footplate & leg rest for standing transfers
- Adjustable hip & lateral supports
- Wide range of growth



Primo model

## removable & washable upholstery



Custom model



LONG SITTING PAD



ADJUSTABLE THIGH PADS



GRAB RAIL

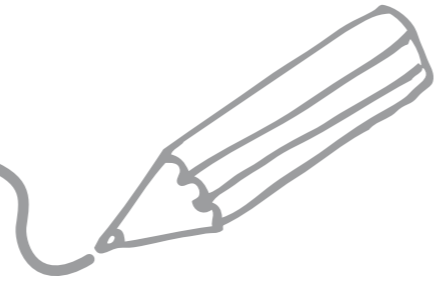


ANKLE SUPPORTS



# for learning

positioning throughout school years



## features!



LARGE TRAY



HYDRAULIC HEIGHT ADJUSTMENT



SWING AWAY BODY SUPPORTS

Can fit at any school desk 



Custom model

fantastic height range

- \* Hydraulic & electric height adjustment available.
- \* Adjustable sacral pad (Custom & Dynamix only)
- \* Adjustable height & angle footplates.
- \* Wide range of body supports, lap straps & harnesses.
- \* Large lockable castors.

# for adventure

design which doesn't hold you back

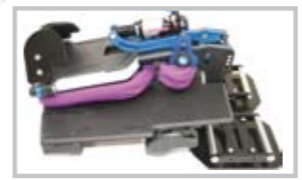


allows supportive seating continuity

Because you can easily interface the Triton™ onto a wide range of indoor and outdoor wheelchair bases, the child can maximise the use of their seating system throughout a diverse variety of environments.

This also ensures that there is continuity with the child's seating, reinforcing their 24 hour postural management programme.

## features



EASILY FOLDED DOWN FOR TRANSPORTATION



ADJUSTABLE SHOULDER PROTRACTOR PADS



ADJUSTABLE HIP PADS



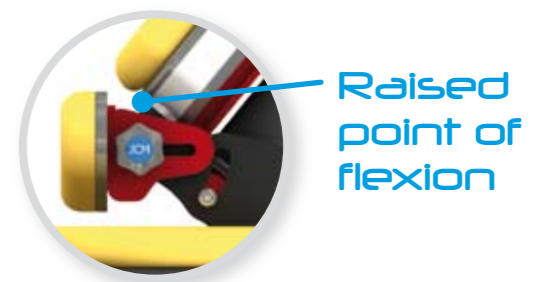
Custom model



# Controlled Pelvic Positioning

One of the great innovations of this dynamic system is the point at which the chair back pivots. Until now, other dynamic systems available have pivoted from the base allowing the pelvis to slide out of alignment.

JCM have overcome this potential problem by raising the point of flexion, allowing the extensor to occur in the upper trunk whilst holding the pelvis in the preferred stable position.



# Patented Dynamic Back

The unique dynamic back mechanism allows the user to extend during spasm and return to a functional seating position upon relaxation.

This system is ideal for clients with a strong extensor spasm and varying muscle tone as it not only allows you to control the back angle and position of the sacral pad, but also allows you to set the strength of resistance and power of return to suit the individual requirements of the user.

Any extreme forces are absorbed, making the Triton Dynamix® less susceptible to structural failure in the back and footplate, unlike other more traditional, rigid seating systems available.

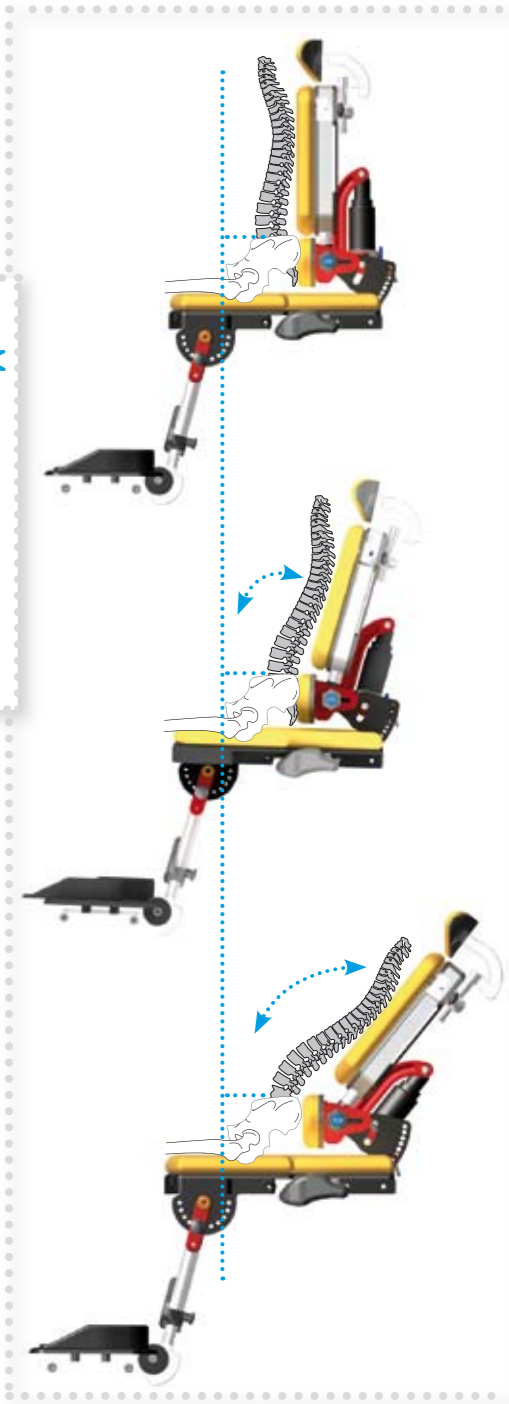
# Dynamic Footplate

Our dynamic footplate permits an amount of give, allowing for extension to take place whilst cushioning the force on both user and chair.



While the upper trunk is allowed to extend naturally the pelvis is held in a stable position

Dynamic mechanism can be disengaged.



# Modular Design

The Triton™ seating unit has been developed to maximise positional functionality and user versatility. The modular construction removes the usual limitations that are found within other seating systems, it allows you to configure the system to your exact requirements, and means you only specify the parts you need.

You can choose from a range of seat, back, body supports and accessories (shown opposite), all of which combine to offer individually tailored support and growth adjustment to maximise your budget.

*Choose the combination of supports which suit your own specific needs*

# Accessories



MULTI ADJUSTABLE HEADREST



SHOULDER PROTRACTOR PADS  
(\*NOT AVAILABLE WITH PRIMO MODEL)



LATERAL / FLEXI SUPPORTS



TRAY



GRAB RAIL



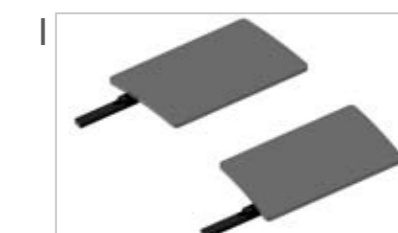
ACTIVITY FRAME



ARMS



SPLIT SEAT CUSHION



SEAT FRAME EXTENSION FOR SPLIT SEAT CUSHION



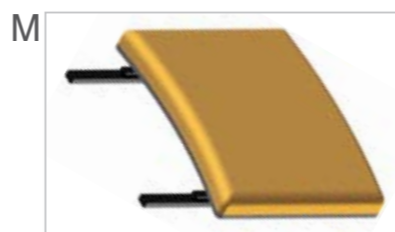
HIP PADS



HIP PAD SUPPORT BAR  
(\*NEEDED FOR CHAIRS WITHOUT ARMS)



ANTI THRUST SEAT WEDGE



LONG SITTING PAD  
(ONLY AVAILABLE ON SIZES 0 AND 1)



INNER THIGH PAD + SPLIT SEAT FRAME EXTENSION



OUTER THIGH PAD + SPLIT SEAT FRAME EXTENSION



PADDED CENTRE PULL LAP STRAP



2 POINT CAM BUCKLE LAP STRAP



4 POINT LAP STRAP



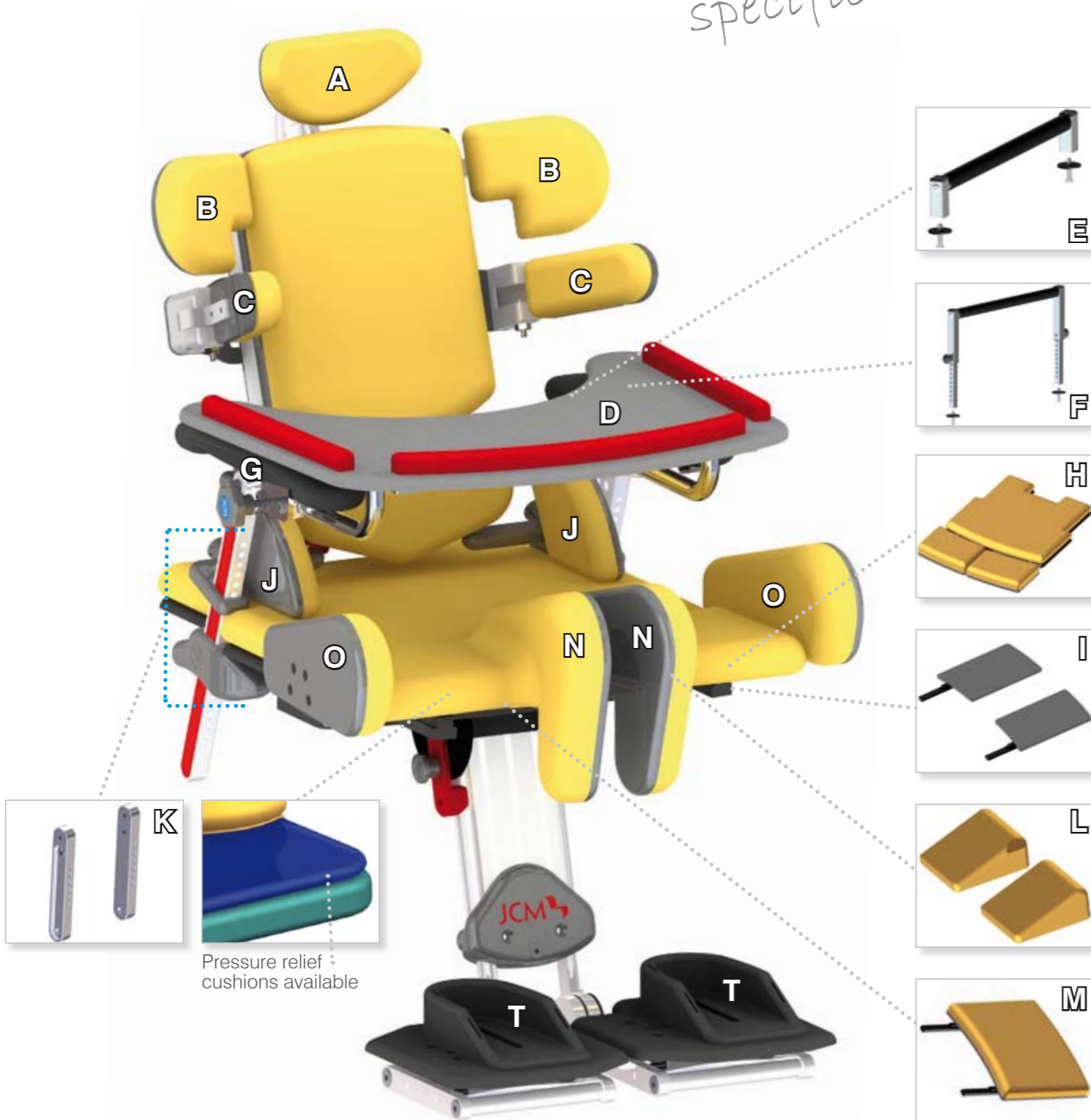
SHOULDER HARNESS



SANDALS



ANKLE SUPPORTS



Pressure relief cushions available

# Base Options

Once you have selected the appropriate seat option, the next step is to choose your base. Our range includes bases suitable for every environment, all of which are fitted with JCMs unique 3 point locking interface which ensures maximum stability and facilitates a quick and easy transfer. Whatever your requirements we can offer a combination which is tailor made to suit your needs.

*fit the seating system onto a wide range of bases...*

*for play & school*



*choose a base to suit your needs*

*quick & easy transfer*

The JCM Multi Height & Tilt Base  
A versatile, tilt in space base with great height adjustment suitable for both home and school.



JCM MULTI HEIGHT AND TILT BASE

*for adventure*



RADCLIFFE SHADOW - MANUAL TILT IN SPACE WHEELCHAIR



INVACARE BLADE PLUS - LIGHTWEIGHT MANUAL WHEELCHAIR BASE



INVACARE SPECTRA PLUS / BLITZ - ELECTRIC WHEELCHAIR BASE

JCMs unique 3 point locking interface:



Simply clips onto interface.



JCM TX TILT IN SPACE MANUAL WHEELCHAIR CHASSIS



OTTO BOCK DISCOVERY - MANUAL TILT IN SPACE WHEELCHAIR

# Key Features

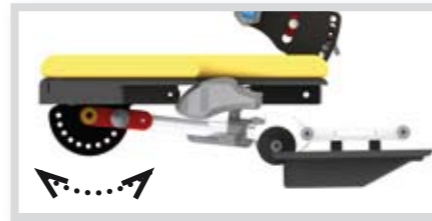
## Growth Adjustment

The Triton™ covers the greatest age range with 7 sizes available across 3 models. Several adjustments can be made to the following parts of the chair which ensures the system perfectly supports each individual user.

- Shoulder protraction pad width & angle
- Seat height
- Seat depth
- Sacral pad height, depth & angle
- Hip pad positioning width & angle
- Headrest height & angle
- Lateral & flexi support positioning
- Arm height & angle
- Footplate height & angle
- Back height

## Adjustable Leg Rest

The wide range of adjustment enables the feet and legs to be supported in various positions. The leg rest can be easily folded away which makes seat transportation straightforward and sit to stand transfers unobstructed.



## Adjustable Back Angle

The easily adjustable back angle is a standard feature on all models.



## Adjustable Sacral Pad

The sacral pad adjusts in angle as well as vertically and horizontally so you can ensure you achieve the correct lumbar curve in the users lower back and fine tune/control the position of pelvis with clients who have very specific positioning needs.



## Footplates

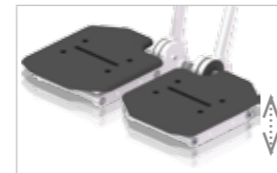
We have 3 different footplate designs which are tailored to suit our 3 chair models.



ONE PIECE FOOTPLATE (PRIMO)



SPLIT FOOTPLATE (CUSTOM)



DYNAMIC SPRUNG FOOTPLATE (DYNAMIX)

## Pressure Relief

The Triton™ range includes soft and comfortable pressure relieving foams through to cooling gel and air-filled cushions for those who require high-risk pressure relief.

**SLOW RELEASE FOAM**  
Comes as standard



**COOLING GEL CUSHION**  
For med-high risk of pressure damage & temperature regulation.



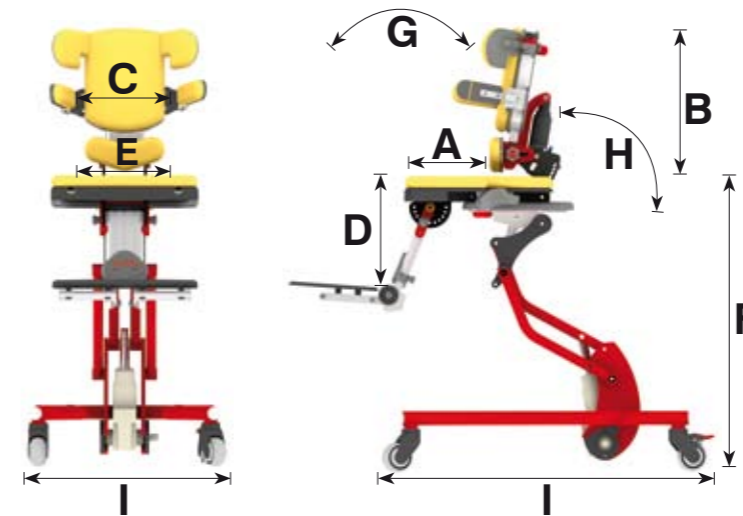
**AIR CUSHION**  
For high risk of pressure damage. (Special option only available on sizes 3, 3 long & 4)



# Technical Specifications

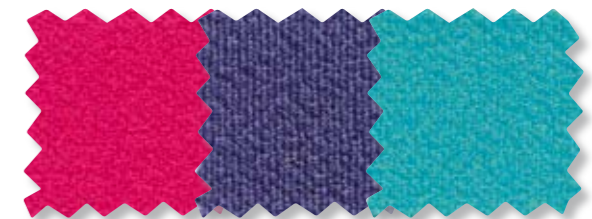
Please note that all measurements given for indication only. JCM can tailor the chair to your precise requirements. Our representatives will assess your child to ensure the chair is fit for purpose both now and for the future.

MEASUREMENTS (mm)	Triton 0		Triton 1		Triton 2		Triton 2 Long		Triton 3		Triton 3 Long		Triton 4	
	MIN	MAX	MIN	MAX	MIN	MAX	MIN	MAX	MIN	MAX	MIN	MAX	MIN	MAX
<b>A</b> Seat Depth	150	250	225	325	300	400	375	475	375	475	450	550	450	550
<b>B</b> Seat to Top of Back	250	350	350	475	400	525	475	625	475	625	525	675	525	675
<b>C</b> Chest Breadth	125	225	150	270	150	270	150	270	250	370	250	370	250	370
<b>D</b> Seat to Footplate	130	210	200	280	270	350	340	420	340	420	410	490	410	490
<b>E</b> Seat Width (Between Hip Pads)	150	275	200	325	250	375	250	375	300	425	300	425	350	475
<b>F</b> Floor to Seat	100mm Castors: Min 355 Max 815 / 75mm Castors: Min 325 Max 785													
<b>G</b> Tilt in Space / Prone	Prone 17° Tilt 25°													
<b>H</b> Back Angle	25° Recline 5° Forward													
<b>I</b> Base Footprint	740 x 570													
<b>J</b> User Weight	Maximum 125 kgs													



## Fabrics & Frame Colours

We offer a vast range of frame colours and fabric types, enabling you to individually tailor the look and feel of your chair. Please see our separate fabric brochure for a full list.



## Sales Support

Established in 1992 JCM is a family organisation which design and manufacture seating for children with special needs. Our national team of representatives is on hand to provide demonstrations, assessments and sales support.



[www.jcmseating.co.uk](http://www.jcmseating.co.uk)

Contact us

15-18 Maxwell Road, Woodston Industrial Estate, Peterborough, Cambridgeshire PE2 7HU  
Tel: 01733 405830 Fax: 01733 405838 Email: [enquiries@jcmseating.co.uk](mailto:enquiries@jcmseating.co.uk)